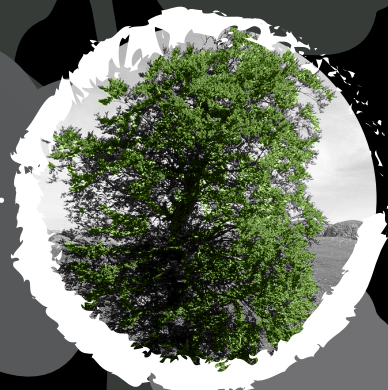


LINEA

Species Overview

BEECH

SCIENTIFIC NAME: *Fagus sylvatica*
Fagus grandifolia



DISTRIBUTION AND AVAILABILITY

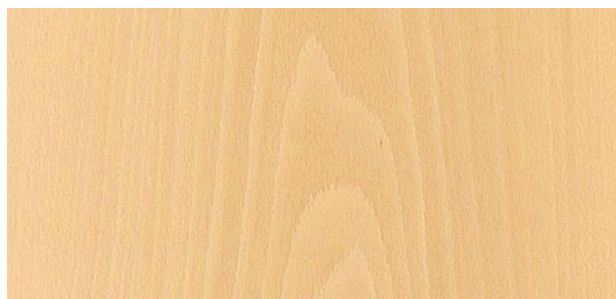


- Europe
- Eastern United States
- Readily Available

COLOR:

Range Variation







Beech is typically a pale cream color, sometimes with a pink or brown hue. Veneer tends to be slightly darker colored, as slicing the veneer usually requires the wood to be prepared with steam, which gives the wood a more golden tone. Flatsawn surfaces tend to be very plain, while quartersawn surfaces exhibit a silvery fleck pattern.



DISCLAIMER

A single sample may not accurately represent the full range of natural variations to be expected. Due to the inherent properties and characteristics of wood, these samples should be viewed as an approximation of what can be obtained. Some wood species have more natural variance in appearance than others. We have made every effort to make colors as accurate as possible. Colors on screen may vary depending on your screen setting and resolution.

BEECH INFORMATION

AVERAGE DRIED WEIGHT		44 lbs/ft ³ (710 kg/m ³)
	GRAIN TEXTURE	Grain is straight, with a fine to medium uniform texture. Moderate natural luster.
	PRICING AVAILABILITY	Moderate. Quarter Cut available at a premium. <i>Readily Available</i>
	COVERED EXTERIOR RATING	Poor Good Excellent
	PHOTOSENSITIVITY	High Moderate Low
	CONSERVATION STATUS	LC - Least Concern (IUCN 3.1)
	VENEER OPTIONS	Flat Cut Quarter Cut

CONTACT OUR TEAM

T 604-776-2265
2320 Peardonville Road, Abbotsford, BC
Canada V2T 6J8
sales@lineaceilings.com lineaceilings.com

