

## FLEXIFELT (PET–Polyethylene Terephthalate)

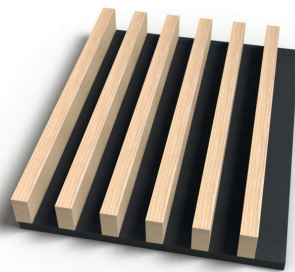
FLEXIFELT is a fantastic, eco-friendly, all-in-one substitute for traditional wood backers and fabric scrims for many of our wall and ceiling products. The FLEXIFELT Backer is a decorative panel substrate offering exceptional acoustic performance with a smooth, fabric-like finish. FLEXIFELT material is semi-rigid, light weight and with its sound absorbing properties, the FLEXIFELT Backer can replace the need and expense for separate acoustical insulation and framing behind the panels.

FLEXIFELT (PET) material is made of 100% non-woven polyester fiber; at least 60% of which is generated from post-consumer content such as recycled plastic beverage containers which makes FLEXIFELT Panel 100% recyclable! FLEXIFELT material is non-hygroscopic, anti-microbial, anti-fungal and free of volatile organic compounds (VOC's) like formaldehyde. The FLEXIFELT Backer offers these benefits in a range of colors and thicknesses sure to enhance any interior building space.

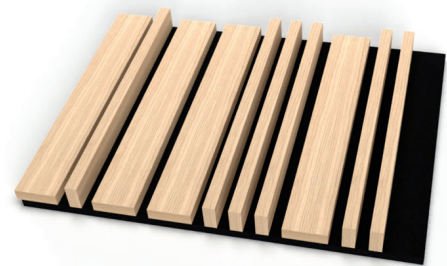
### FLEXIFELT Backers

Can be integrated with the following products

- LINEA Grille
- LINEA Mixed Grille
- LINEA Tegalur Plank
- LINEA Plank
- LINEA Tegalur Grille



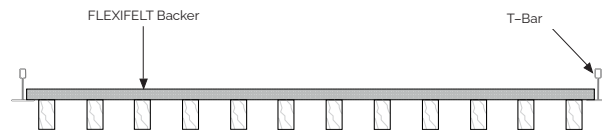
LINEA Grille



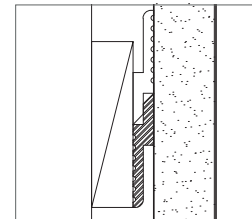
LINEA Mixed Grille

### SECTION DETAIL

Ceiling Install—Lay-in



Wall Install



### TECHNICAL INFORMATION

- PET Types:** Class A Fire Rated and \*Non-Fire Rated
- Fire Rating:** Class A (ASTM E84)
- Core Material:** 100% Polyester Fiber (60% PET-Recycled Fiber, 40% PET Virgin Fiber)
- Edge:** Square
- Size:** 1225mm x 2800mm (4' x 9' Nom)—Class A  
1220mm x 2440mm (4' x 8' Nom)—Class C
- Thickness:** 9mm (3/8"), 12mm (1/2") or 24mm (1")
- Finish:** Mixture of Rough & Smooth
- Colors:** 15+ (Class A Fire Rated) and \*30+ (Non-Fire Rated)
- NRC Rating:** 0.40–1.00 (depending panel thickness and mounting options)
- Weight:** 12mm (1/2")—2300 g/m<sup>2</sup> (0.47 lb/ft<sup>2</sup>)  
24mm (1")—3500 g/m<sup>2</sup> (0.72 lb/ft<sup>2</sup>)
- Density:** 12mm (1/2")—190kg/m<sup>3</sup> (11.7 lb/ft<sup>3</sup>)  
24mm(1")—160kg/m<sup>3</sup> (10lb/ft<sup>3</sup>)
- Installation:** Adhesive or Mechanical Fasteners as required
- Use:** Interior use only



### ACOUSTICS

FLEXIFELT PANELS		
Thickness	NRC—Direct Mount	NRC—With Air Gap**
1" (24mm)	0.60	1.00
1/2" (12mm)	0.40	0.90

Acoustical performance improves as air gap behind the panel increases. Performance will vary by product type and is dependent on open area percentage between wood slats.  
\*\*Based on 200mm air gap.

## COLORS (CLASS A)

Additional colors available for non-fire rated panels (Class C)



### Disclaimer

Maximum Panel lengths for Class A Fire Rated FLEXIFELT Backers (108" / 2800mm) Variation in thickness, fiber mix and color as well as flecks and other slight surface blemishes are an inherent feature of this product and are unavoidable. Variation from batch to batch may occur. Custom Thicknesses and Colors are available and are subject to minimum order quantities.

Contact **LINEA** for details